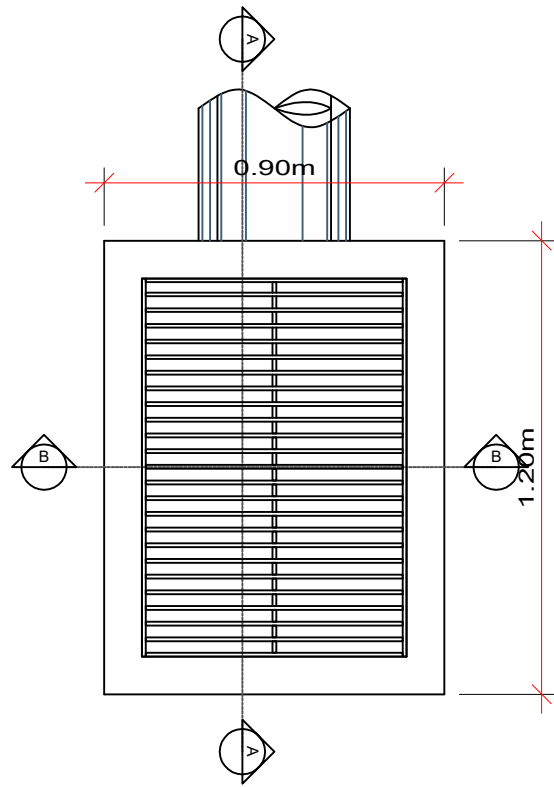
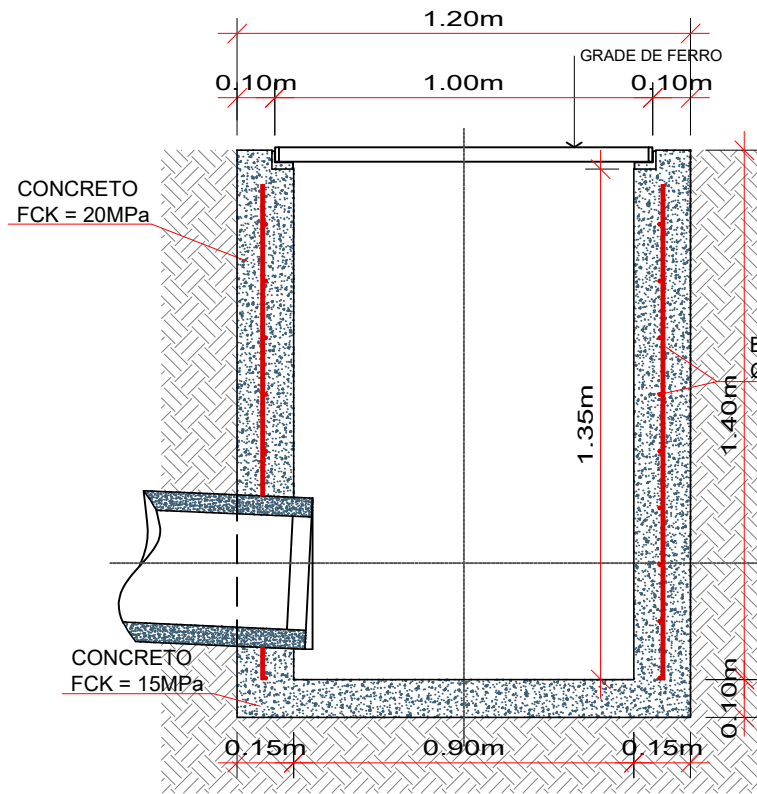


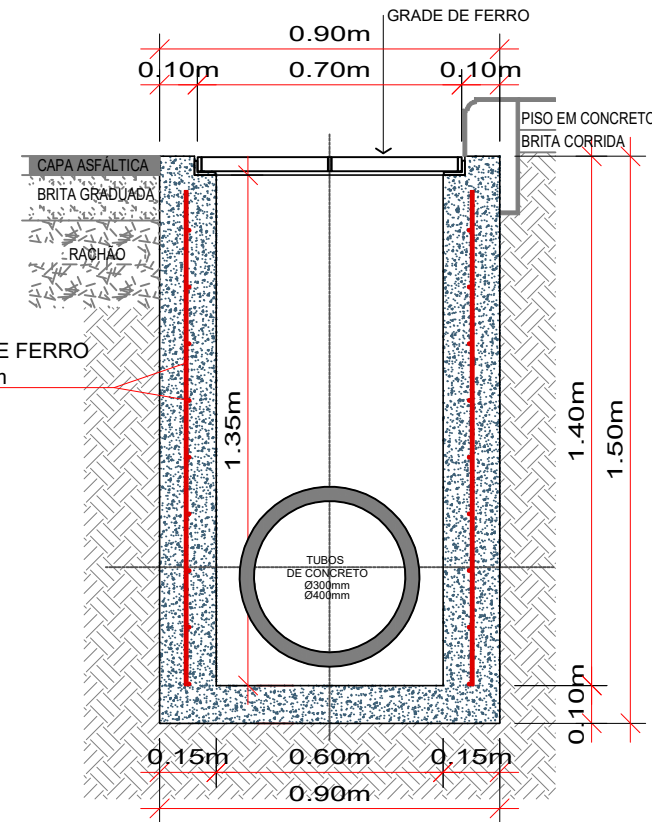
BOCA DE LOBO - TIPO I - Ø300mm/Ø400mm



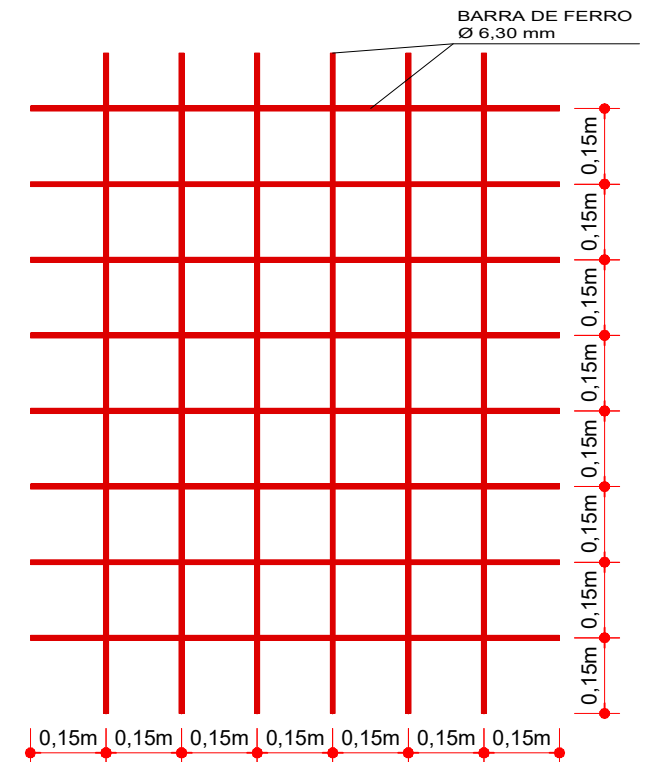
PLANTA BAIXA
Escala 1/20



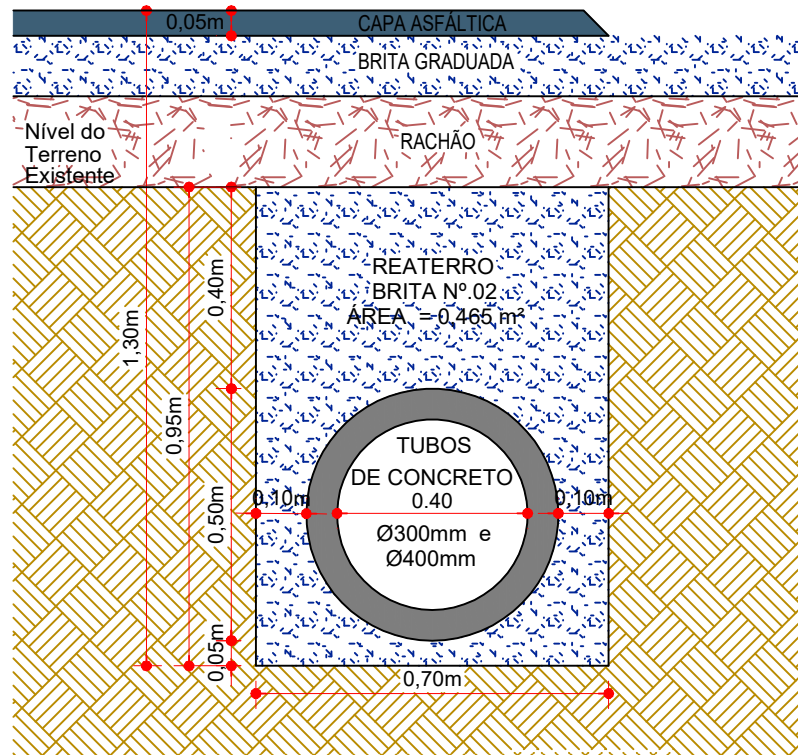
CORTE AA
Escala 1/20



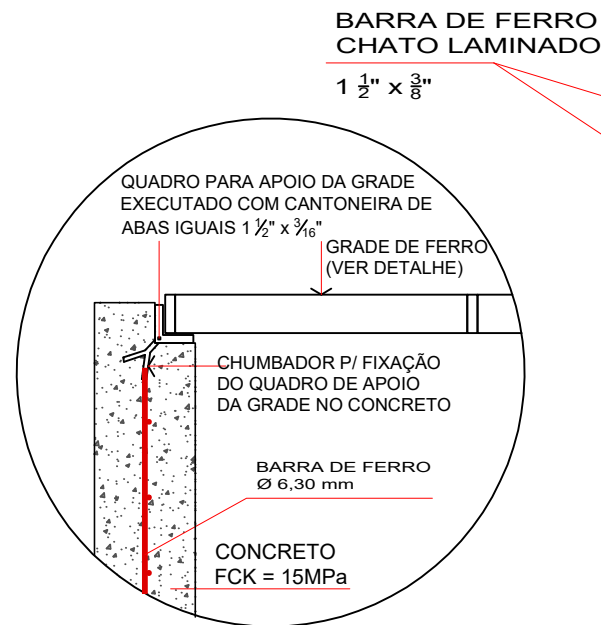
CORTE BB
Escala 1/20



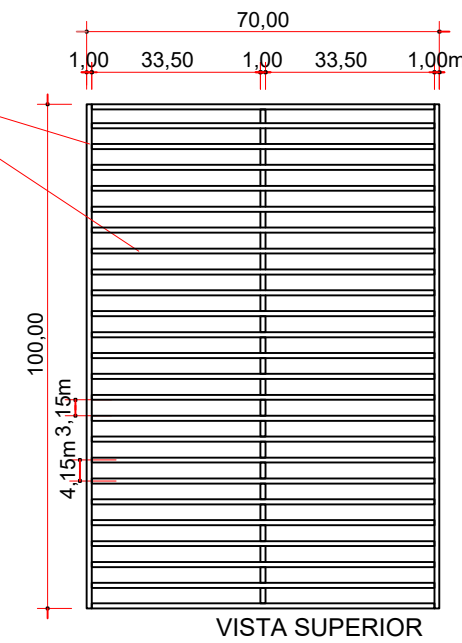
DETALHE DA ARMADURA
Escala 1/15



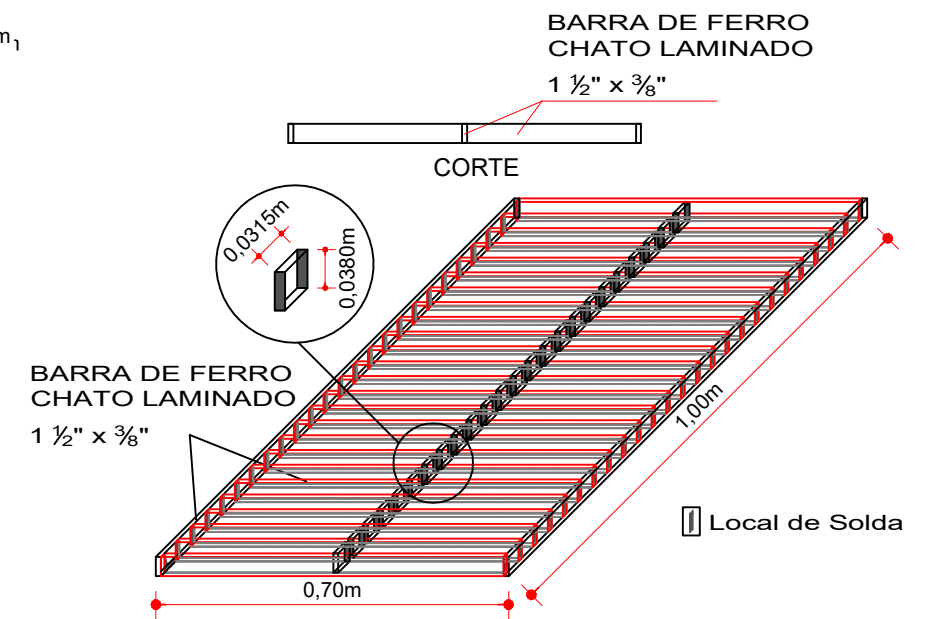
SEÇÃO DE REATERRO DE VALA
VALA COM TUBULAÇÃO DE Ø 400 mm
ESCALA: 1/15



DETALHE APOIO DA GRADE
Escala 1/15



DETALHE DA GRADE
Escala 1/15



PERSPECTIVA DA GRADE
Escala 1/15

ENGENHEIRO RESPONSÁVEL

PREFEITO MUNICIPAL



Projeto: ANA JÚLIA UNGERICH - ENG. CIVIL - CREA/SC 105.295-8
ANDRÉ BRITO DOTTI - ENG. CIVIL - CREA/SC 162.237-5
DENIR NARCIZO ZULIAN - ENG. CIVIL - CREA/SC 50.805-8
MAX MOOSHAMMER - ENG. CIVIL - CREA/SC 139.164-0

Desenho: FELIPE L. PARISOTO

Data: JULHO DE 2019

Revisão: --

Projeto: DRENAGEM

Trecho: Est. 0+0,000 - 8+0,000

Prancha:

DRE. 02/03

Escala: INDICADA