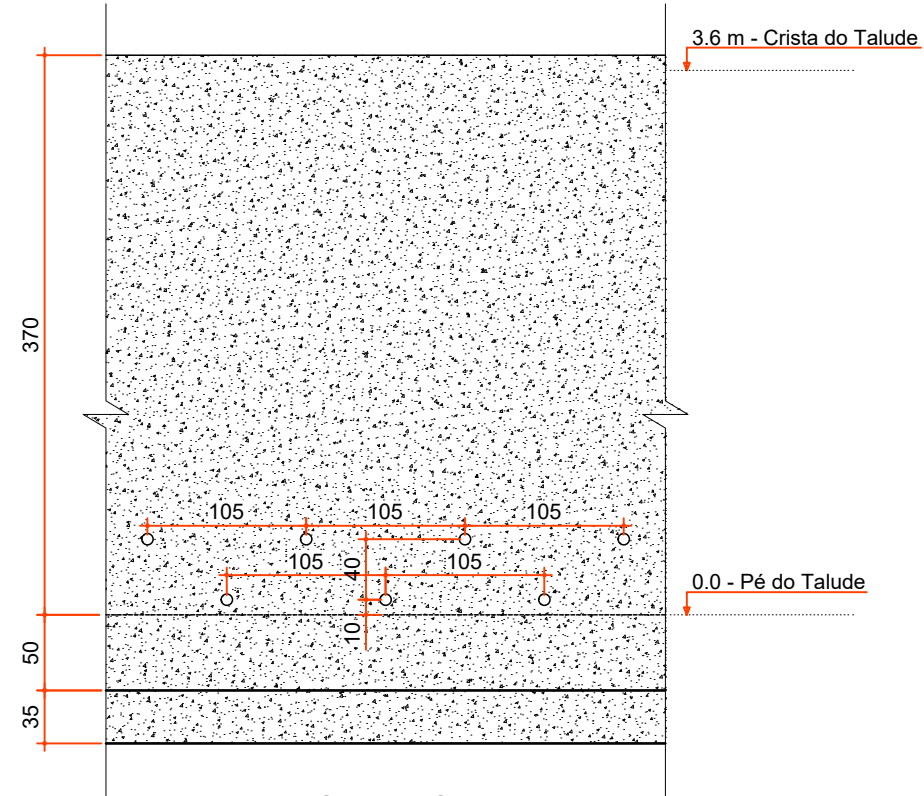
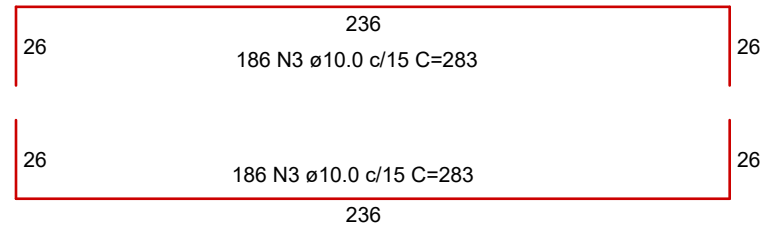
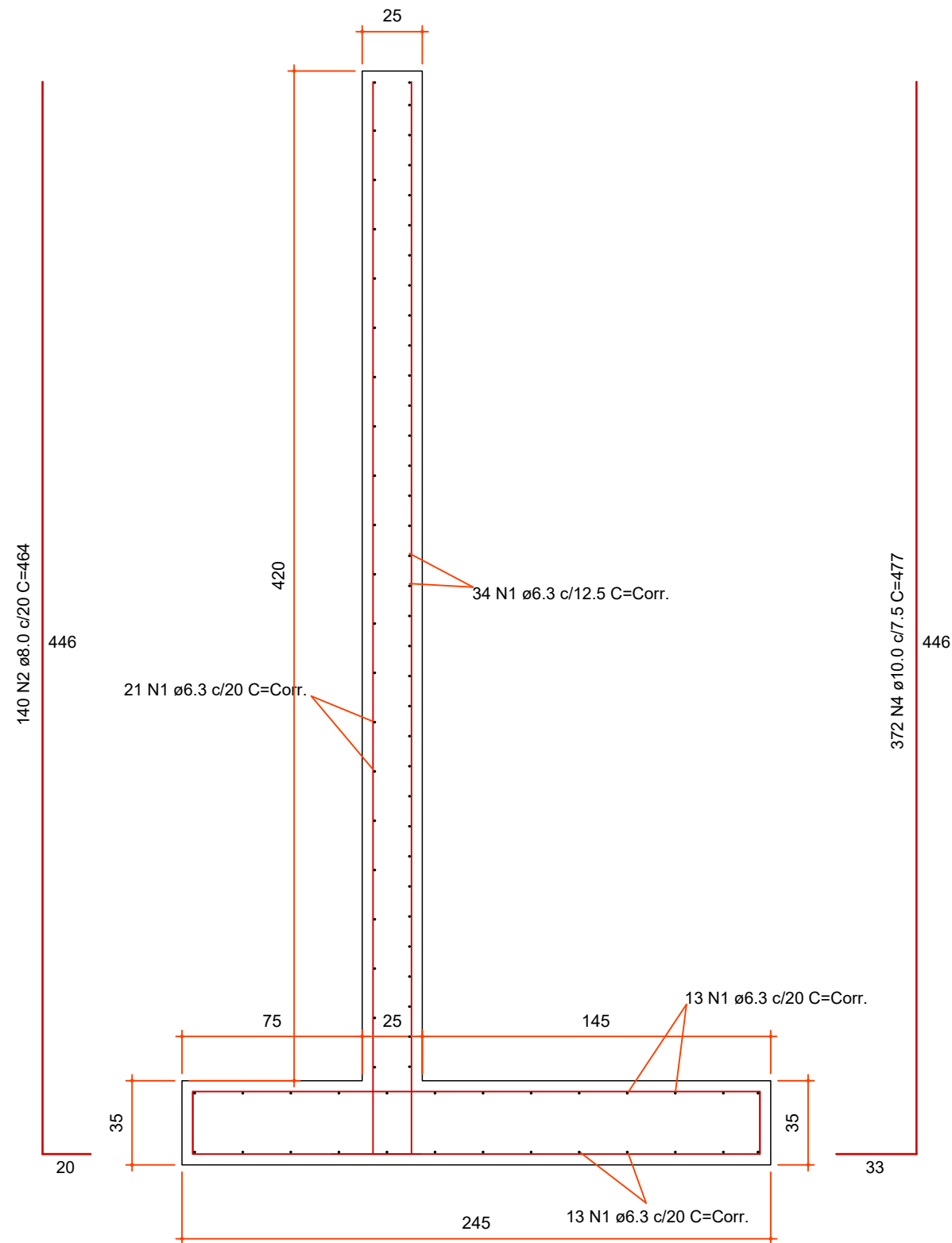


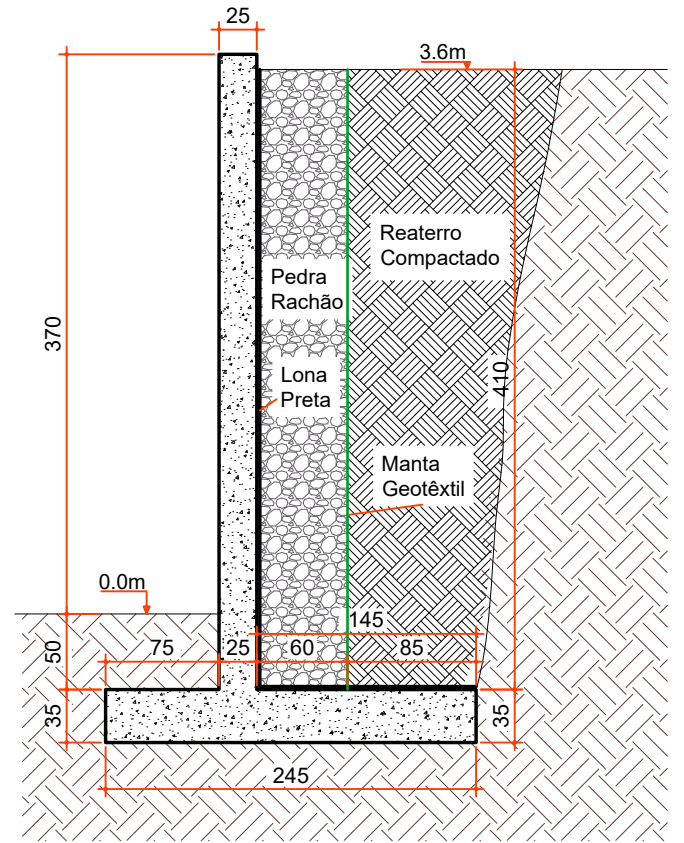
**DETALHAMENTO DAS ARMADURAS**

ESC 1:25



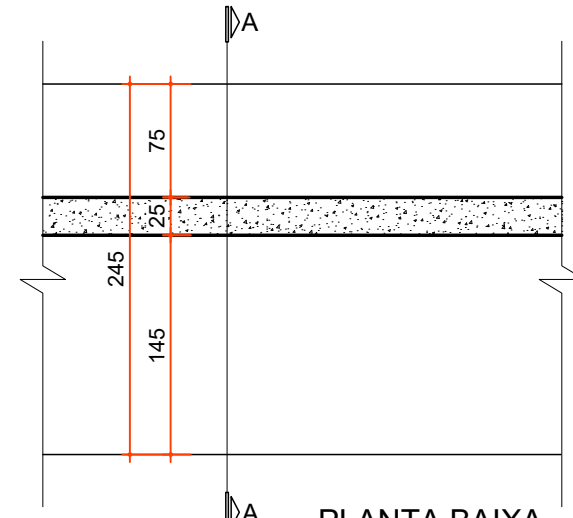
**VISTA FRONTAL**

ESC 1:50



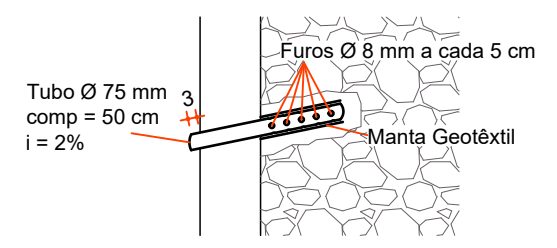
**CORTE A-A**

ESC 1:50



**PLANTA BAIXA**

ESC 1:50



**DETALHE BARBACÃ**

ESC 1:25



Projeto: CONSTRUÇÃO DE MUROS DA CRECHE MUNICIPAL DE IBICARÉ

Responsável Técnico: Ana Júlia U. de Carvalho - Eng. Civil - CREA-SC 105.295-8  
 Andre Brito Dotti - Eng. Civil - CREA-SC 162.237-5  
 Denir Narcizo Zulian - Eng. Civil - CREA-SC 50.805-8  
 Fábio Zilio Caron - Eng. Civil - CREA-SC 140.642-7  
 Lucas F. Balestrin - Eng. Agrônomo - CREA-SC 156.743-7  
 Max Mooshammer - Eng. Civil - CREA-SC 139.164-0  
 Suellen Karine Cervelin - Eng. Civil - CREA-SC 166.933-0

Assinatura Prefeito(a) Municipal Assinatura Responsável Técnico

Desenho: Fábio Z. Caron Data: outubro de 2021 Revisão: -- Escala: Indicadas Trecho: -

**EST. 02/06**