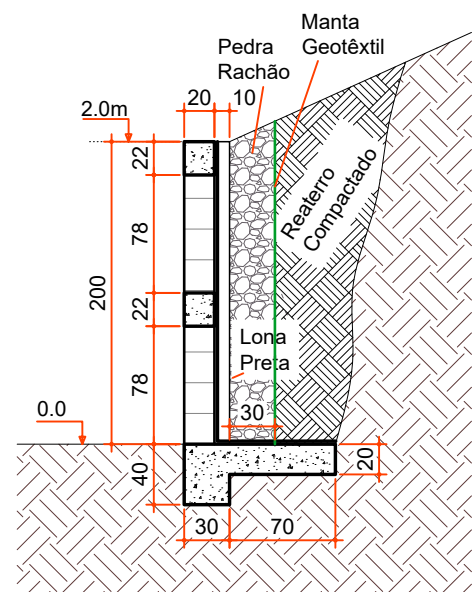
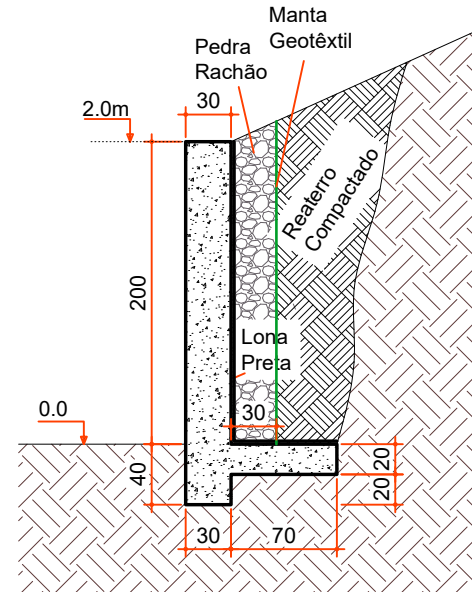


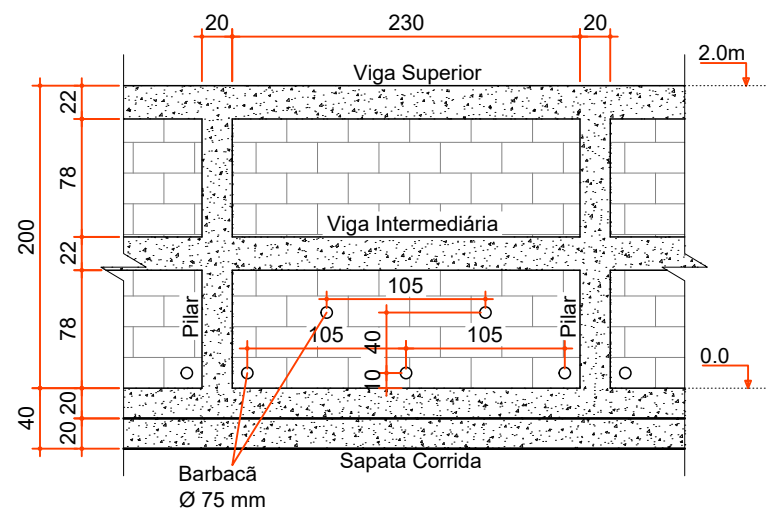
**PLANTA BAIXA**  
ESC 1:50



**CORTE B-B**  
ESC 1:50

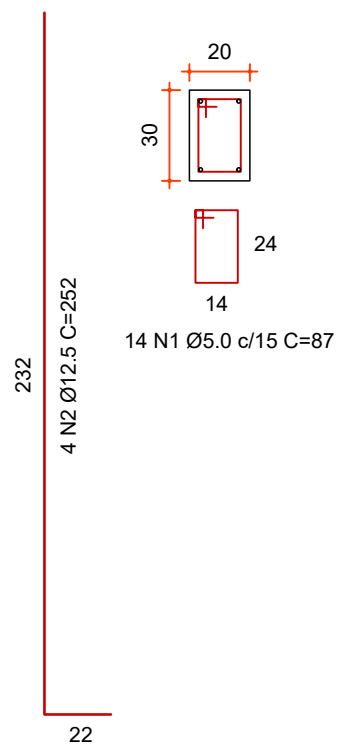


**CORTE A-A**  
ESC 1:50

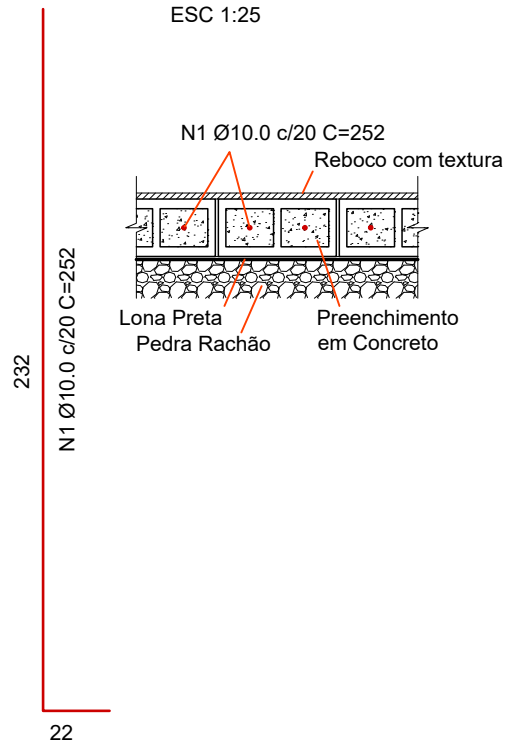


**VISTA FRONTAL**  
ESC 1:50

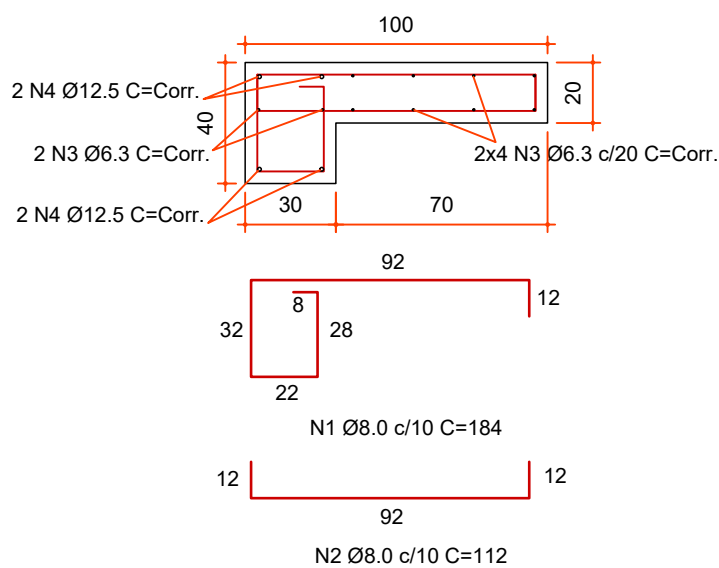
**PILARES**  
ESC 1:25



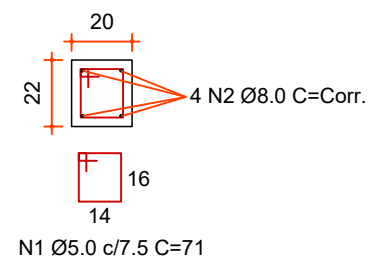
**PAREDE**  
ESC 1:25



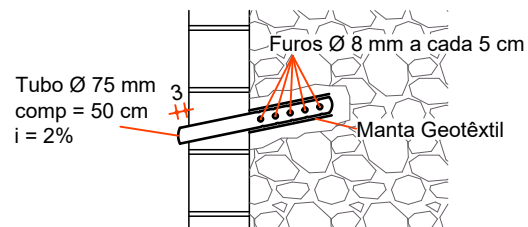
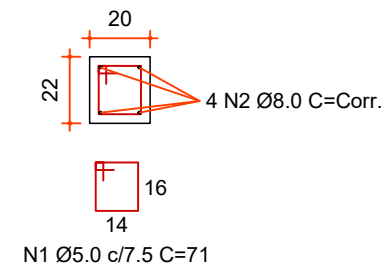
**SAPATA CORRIDA**  
ESC 1:25



**VIGA INTERMEDIÁRIA**  
ESC 1:25



**VIGA SUPERIOR**  
ESC 1:25



**DETALHE BARBACÃ**  
ESC 1:25



Projeto:  
CONSTRUÇÃO DE MUROS DA CRECHE MUNICIPAL DE IBICARÉ

Responsável Técnico:  
Ana Júlia U. de Carvalho - Eng. Civil - CREA-SC 105.295-8  
André Brito Dotti - Eng. Civil - CREA-SC 162.237-5  
Denir Narcizo Zulian - Eng. Civil - CREA-SC 50.805-8  
Fábio Zilio Caron - Eng. Civil - CREA-SC 140.642-7  
Lucas F. Balestrin - Eng. Agrônomo - CREA-SC 156.743-7  
Max Mooshammer - Eng. Civil - CREA-SC 139.164-0  
Suellen Karine Cervelin - Eng. Civil - CREA-SC 166.933-0

EST.  
03/06

Assinatura Prefeito(a) Municipal Assinatura Responsável Técnico  
Desenho: Fábio Z. Caron Data: outubro de 2021 Revisão: -- Escala: Indicadas Trecho: -