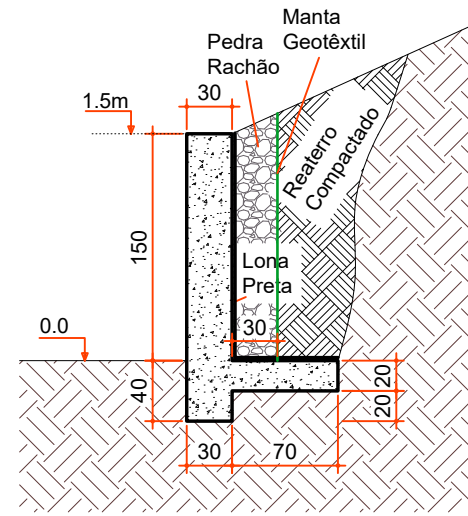
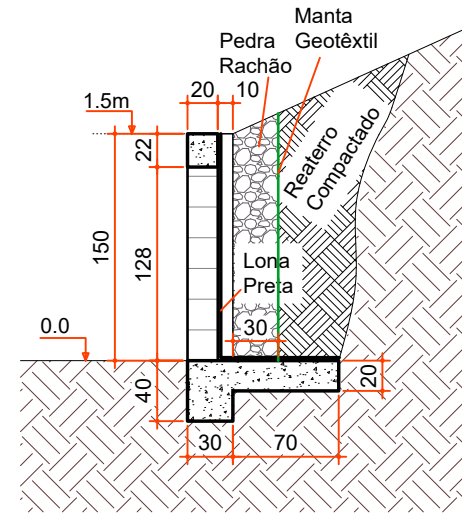


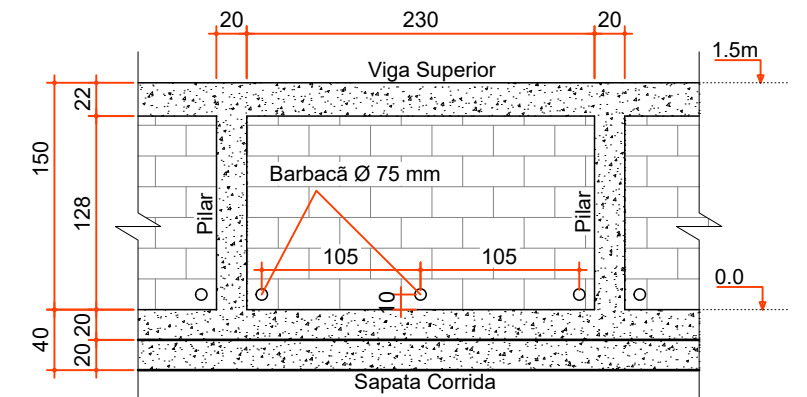
PLANTA BAIXA
ESC 1:50



CORTE A-A
ESC 1:50

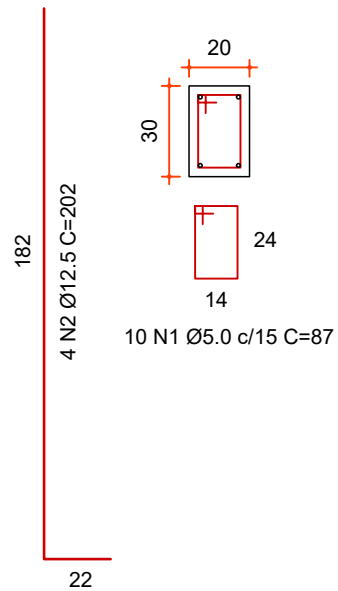


CORTE B-B
ESC 1:50

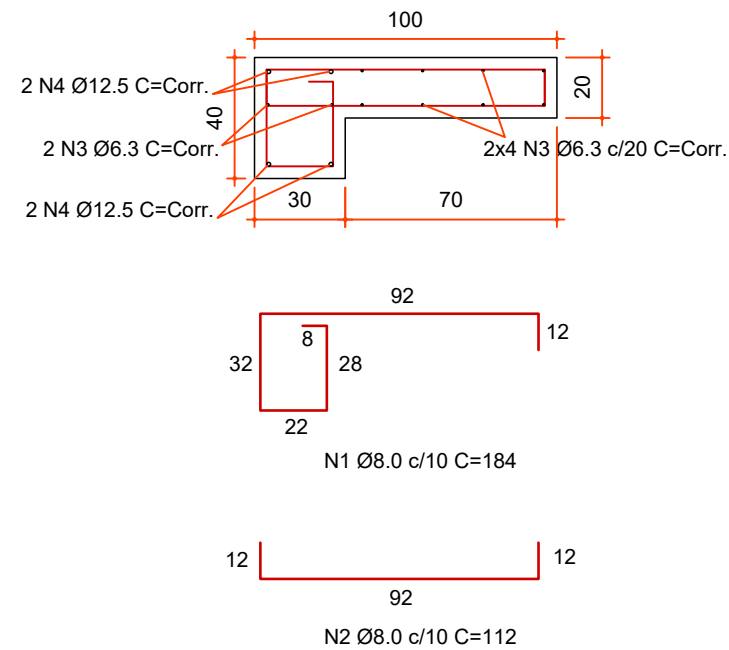


VISTA FRONTAL
ESC 1:50

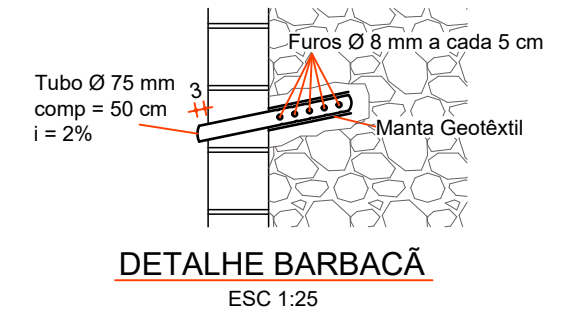
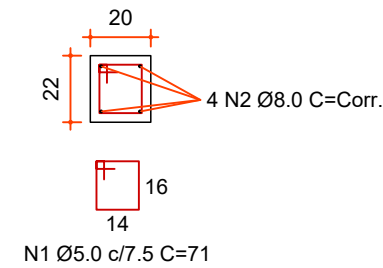
PILARES
ESC 1:25



SAPATA CORRIDA
ESC 1:25



VIGA SUPERIOR
ESC 1:25



DETALHE BARBACÃ
ESC 1:25



Projeto:
CONSTRUÇÃO DE MUROS DA CRECHE MUNICIPAL DE IBICARÉ

Responsável Técnico: Ana Júlia U. de Carvalho - Eng. Civil - CREA-SC 105.295-8
 Andre Brito Dotti - Eng. Civil - CREA-SC 162.237-5
 Denir Narcizo Zulian - Eng. Civil - CREA-SC 50.805-8
 Fábio Zilio Caron - Eng. Civil - CREA-SC 140.642-7
 Lucas F. Balestrin - Eng. Agrônomo - CREA-SC 156.743-7
 Max Mooshammer - Eng. Civil - CREA-SC 139.164-0
 Suellen Karine Cervelin - Eng. Civil - CREA-SC 166.933-0

Assinatura Prefeito(a) Municipal Assinatura Responsável Técnico

Desenho: Fábio Z. Caron Data: outubro de 2021 Revisão: -- Escala: Indicadas Trecho: -

EST.
04/06